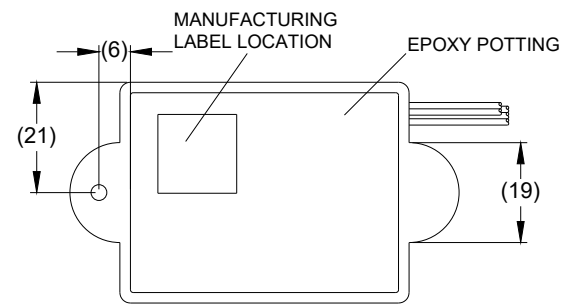
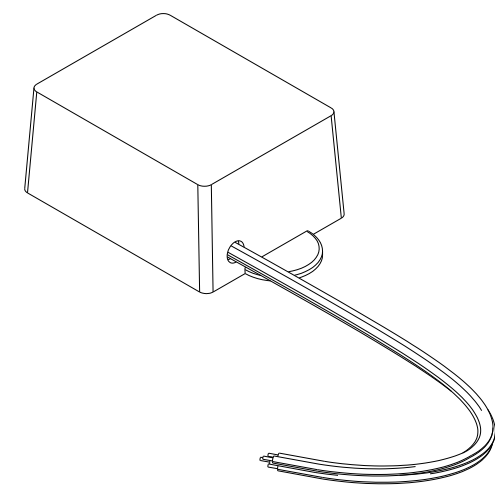
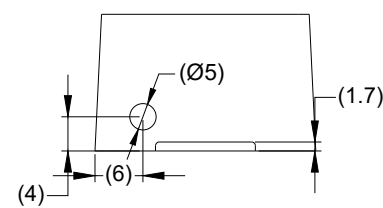
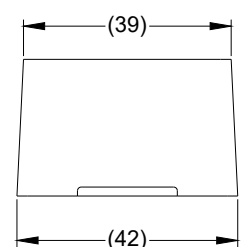
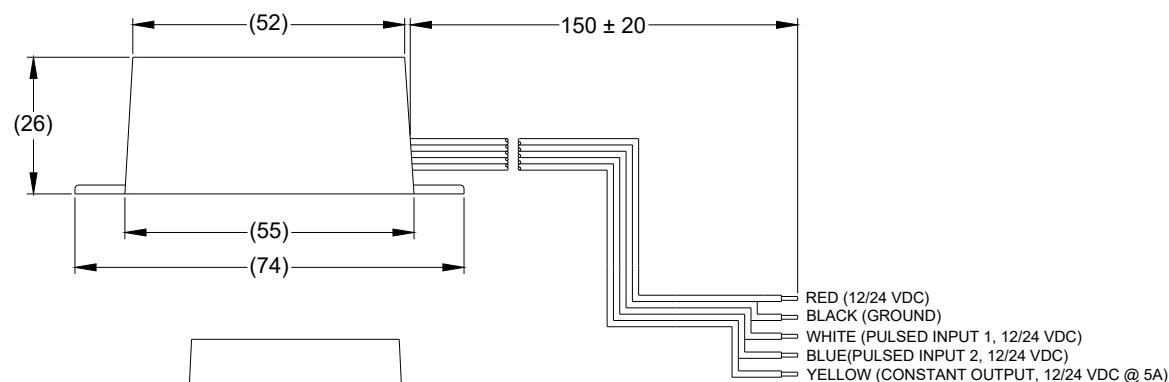
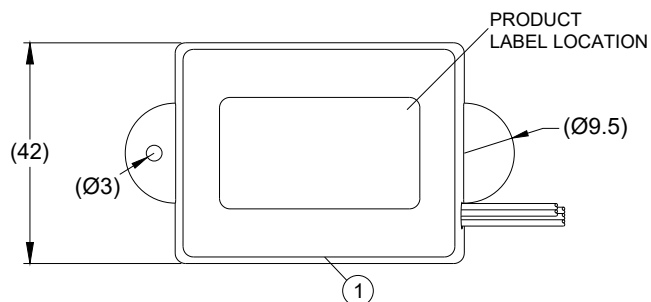


| ITEM | PART NO | QTY | MODEL / DESCRIPTION |
|------|---------|-----|--|
| ① | (7545) | 1 | TS-001-ECU-E |
| ② | (3557) | 1 | TS-001-ECU-IG / INSTALLATION GUIDE (NOT SHOWN) |

R3

| Revision Notes | | | | |
|--|-------------------|-------------------|-------------------|----------------|
| R1 - CABLE LENGTH UPDATED, SPECIFICATIONS REVISED | | | | |
| APA: - | Drawn: - | Checked: L BRAR | Approved: D KERAI | Date: 15/02/12 |
| R2 - MANUFACTURING LABEL DETAILS ADDED AS PER Q1555 | | | | |
| APA: A HEDDLE | Drawn: R BATES | Checked: P MISSEN | Approved: G PLITH | Date: 17/12/13 |
| R3 - FRAME UPDATED, KIT TABLE ADDED, NOTES REVISED, AS PER P1648 | | | | |
| APA: A WRIGHT | Drawn: B STROHMER | Checked: E MATHEW | Approved: D FOALE | Date: 16/07/25 |



SPECIFICATION

RATED VOLTAGE: 12 AND 24 VOLTS DIRECT CURRENT (WORKING VOLTAGE RANGE 10 THRU 30 VOLTS)
 RATED CURRENT: 300 MILLIAMPERES OR LESS
 MAX CURRENT HANDLING: 10 AMPERES
 CABLE THICKNESS: POWER CABLES 16/0.2MM

OPERATION

THE ECU WILL TAKE A PULSED INPUT SUCH AS AN INDICATOR ON INPUT 2 AND ENABLE A CONSTANT OUTPUT ON THE YELLOW CABLE. THIS CAN THEN BE USED TO POWER DEVICES.
 IF BOTH PULSED INPUTS ARE ACTIVE AT THE SAME TIME SUCH AS HAZZARD LIGHTS THERE WILL BE NO OUTPUT. FURTHERMORE IF PULSED INPUT 1 IS ACTIVATED WHILST A CONSTANT OUTPUT IS ACTIVE THE OUTPUT WILL DISABLED.

- NOTES:**
- DIMENSIONS IN MM.
 - POTTING SHOULD FULLY ENCAPSULATE THE PCB ALTHOUGH THE RELAY CAN PROTRUDE.
 - HOLE LOCATIONS ON THE HOUSING ARE THE RESPONSIBILITY OF THE ASSEMBLY PLANT AND SHOULD ADHERE TO DRAWING "GPL2-DRILL ISSUE 1".
 - THE PULSED INPUTS CONFIGURATION IS DEPENDENT ON THE POSITION OF THE DRIVER IN THE VEHICLE.
 - PLEASE REFER TO FITTING INSTRUCTIONS FOR MORE DETAILS ON USAGE CONFIGURATIONS OF THIS ECU.
 - FOR LABEL AND PACKAGING DETAILS REFER TO MASTER BOM.
 - ANY CUSTOMER MODIFICATION OF THIS PRODUCT CAUSING SUBSEQUENT FAILURE IS NOT A LIABILITY OF BRIGADE ELECTRONICS PLC.

R3

R3

PROPRIETARY NOTICE
 THIS DESIGN AND TECHNICAL INFORMATION APPEARING ON THIS DRAWING IS THE PROPERTY OF BRIGADE ELECTRONICS, AND IS DISCLOSED IN CONFIDENCE. IT IS NOT TO BE COPIED, REPRODUCED, REVEALED TO OR EXPROPRIATED BY OTHERS, EITHER IN WHOLE OR IN PART WITHOUT THE EXPRESS WRITTEN CONSENT OF BRIGADE ELECTRONICS.



| | | | | |
|---------------------|--------------------------------|----------------------|----------------------|--------------------|
| Sheet 1 of 1 | Assembly PI Approval A. HEDDLE | Approved by D. KERAI | Checked by M. BUTLER | Drawn by J. NEWMAN |
| Customer Approval - | Angle of Projection | Units mm | Scale N/A | Released 01/11/10 |
| | | Status RELEASED | TS-001-ECU | |
| | | Part No A1362A | BE-001242-03-10 | |